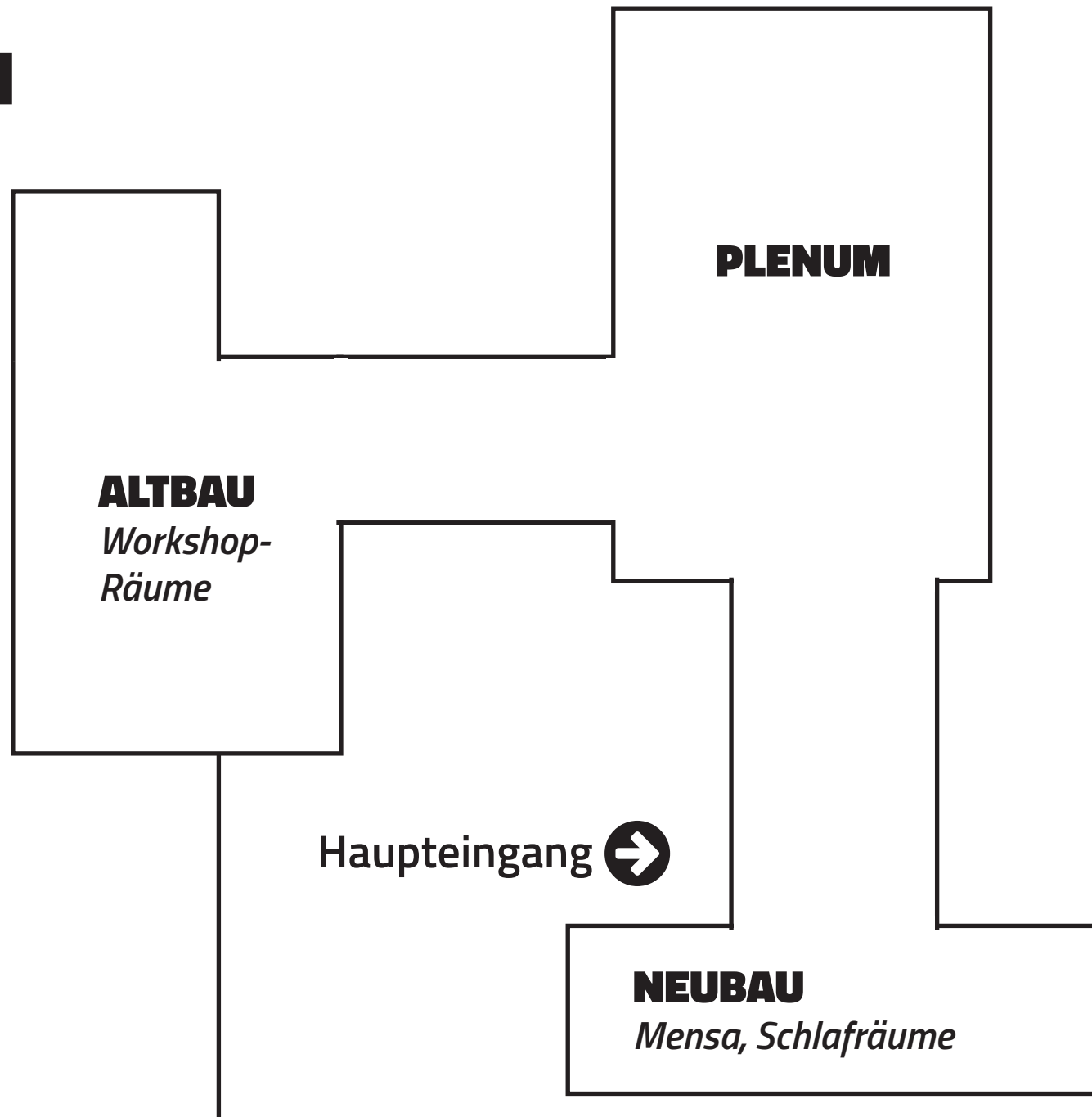


LAGEPLAN

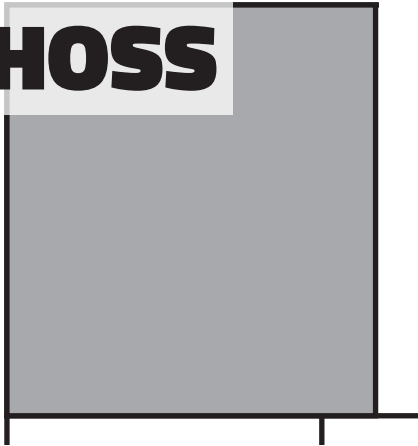


Salomonstraße

zur Haltestelle Johannisplatz 

ERDGESCHOSS

Neubau



↑ zum Plenum
und zum Altbau

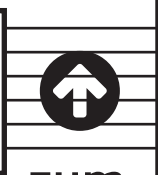
Haupteingang →

Rauch-Bereich

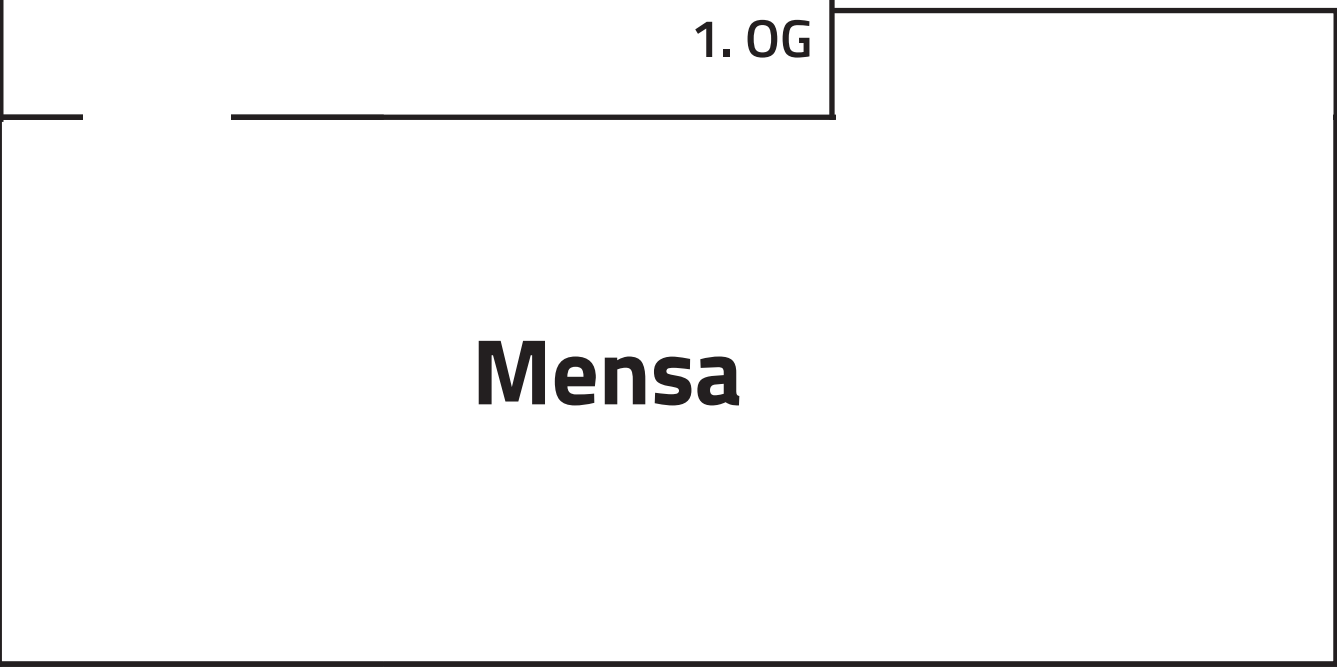
Anmeldung
& Infopunkt



Snacks &
Getränke



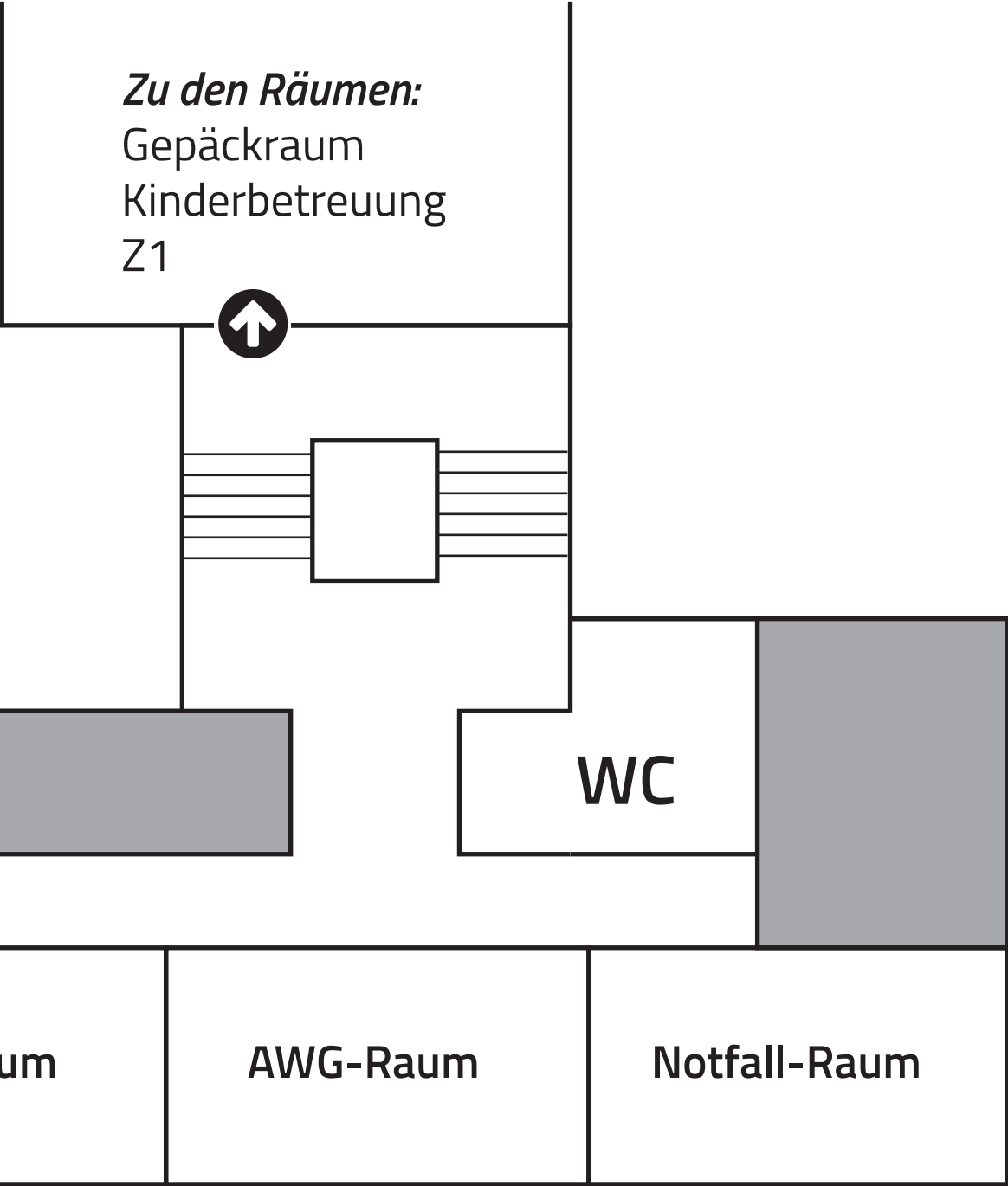
zum
1. OG



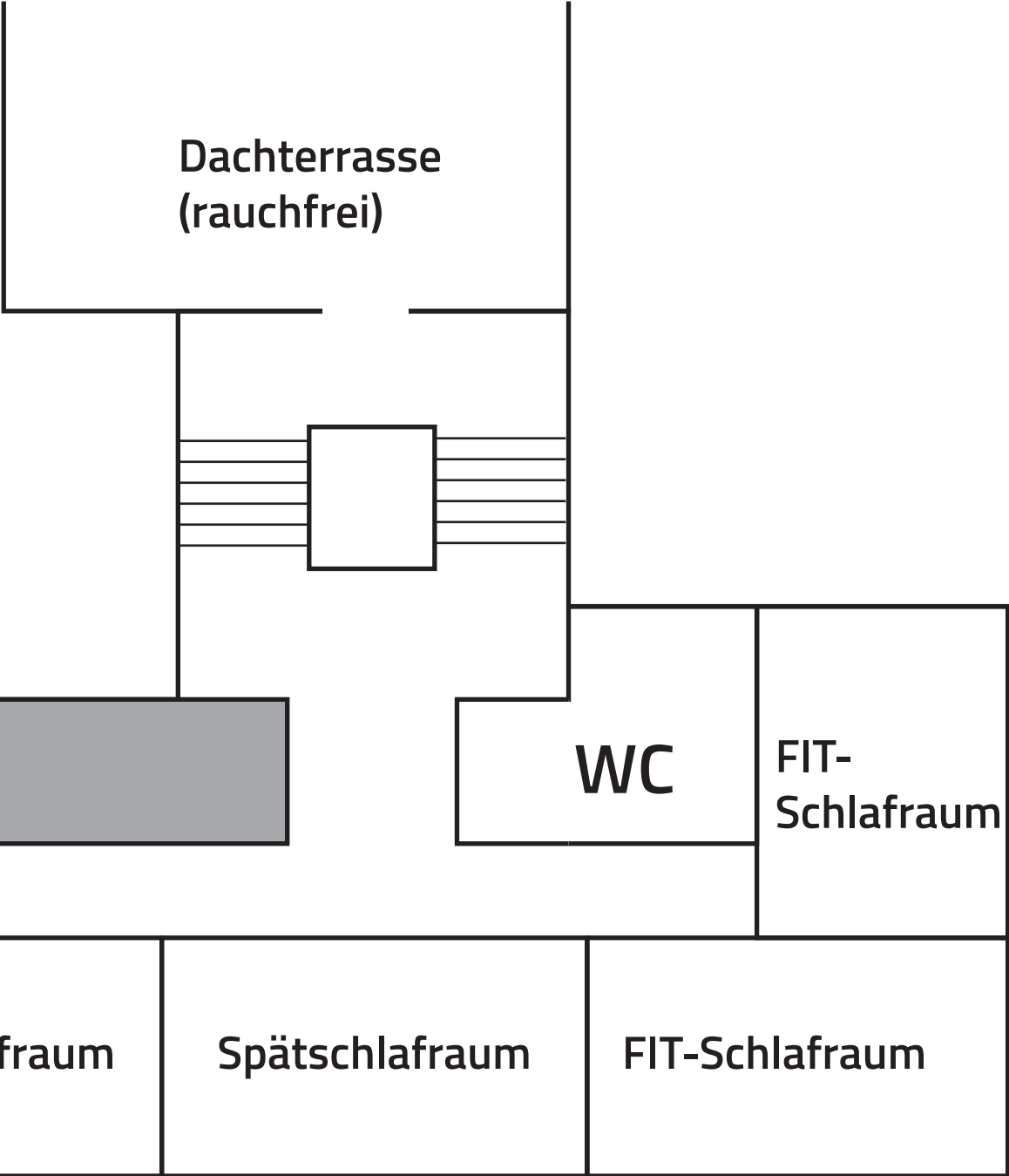
Café

Mensa

1. OBERGESCHOSS Neubau

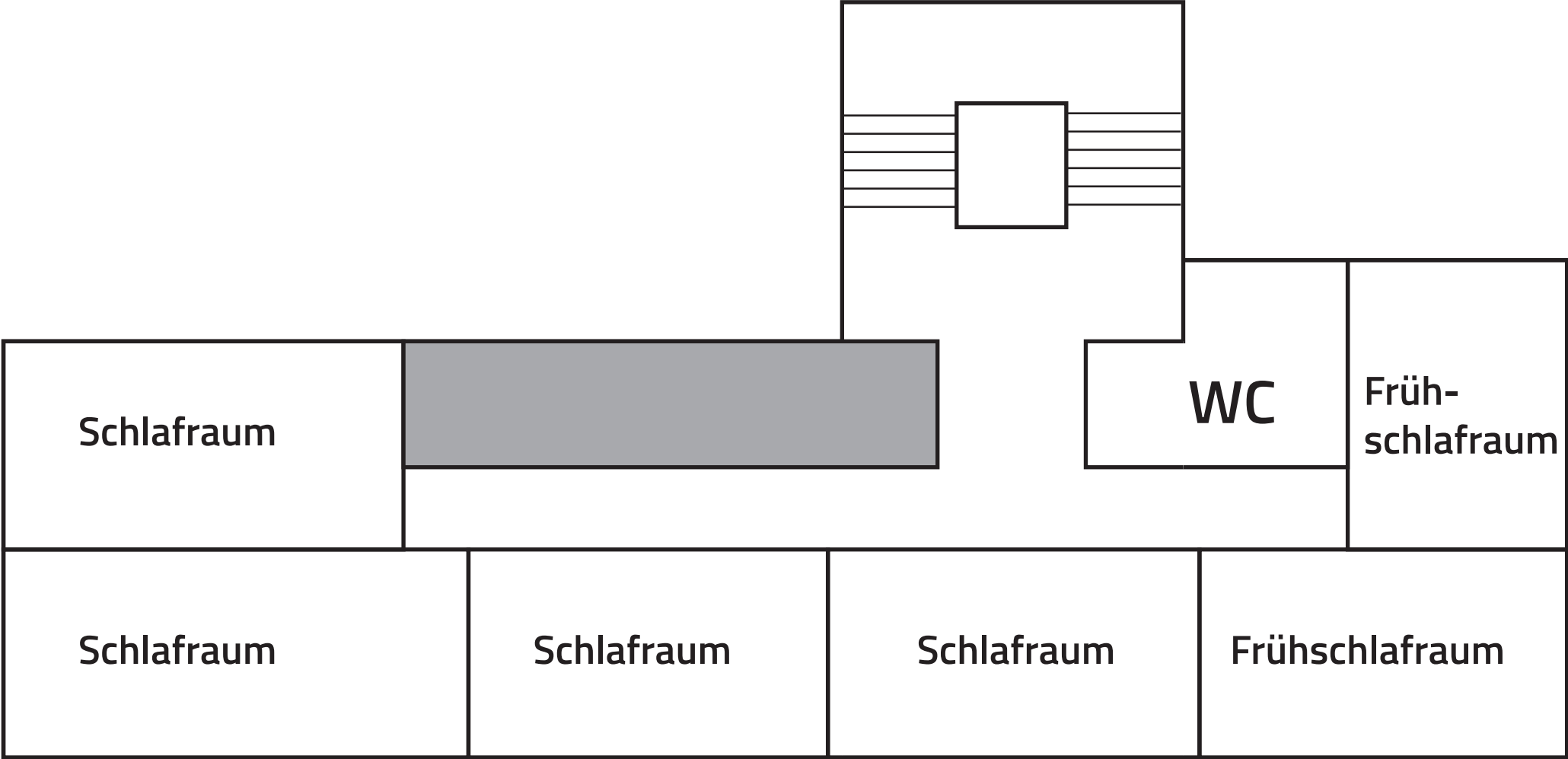


2. OBERGESCHOSS Neubau



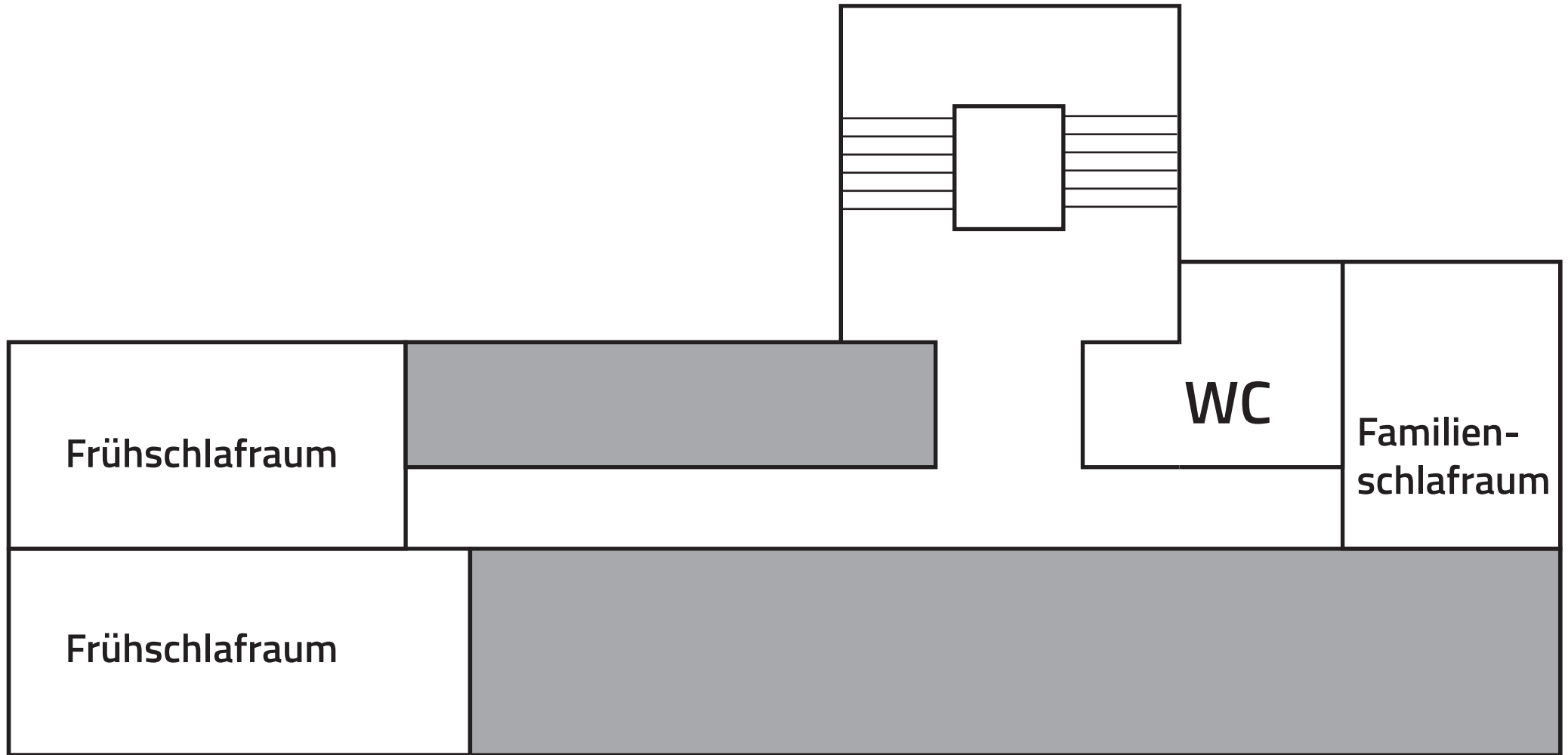
3. OBERGESCHOSS

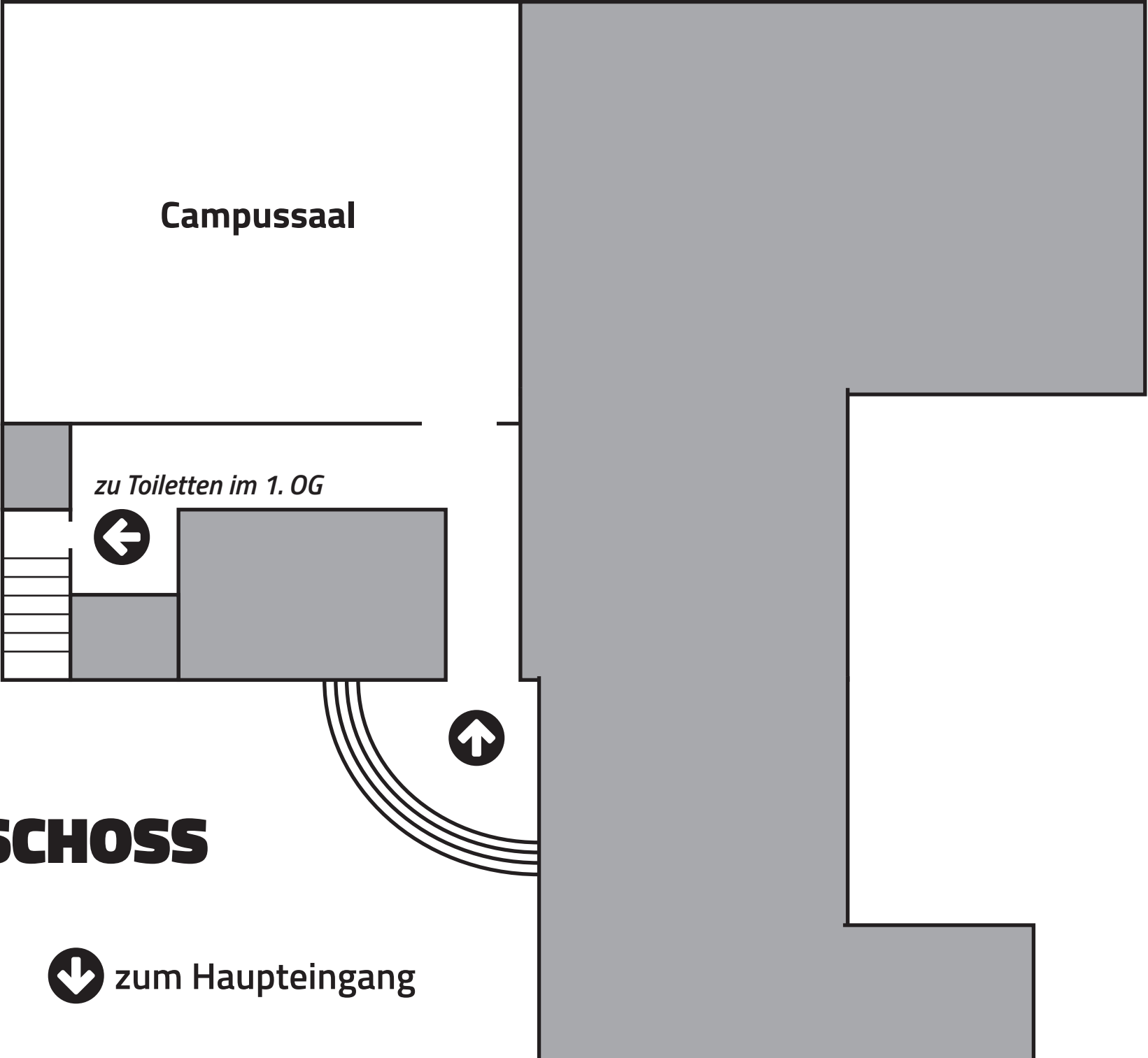
Neubau



4. OBERGESCHOSS

Neubau





Campussaal

zu Toiletten im 1. OG

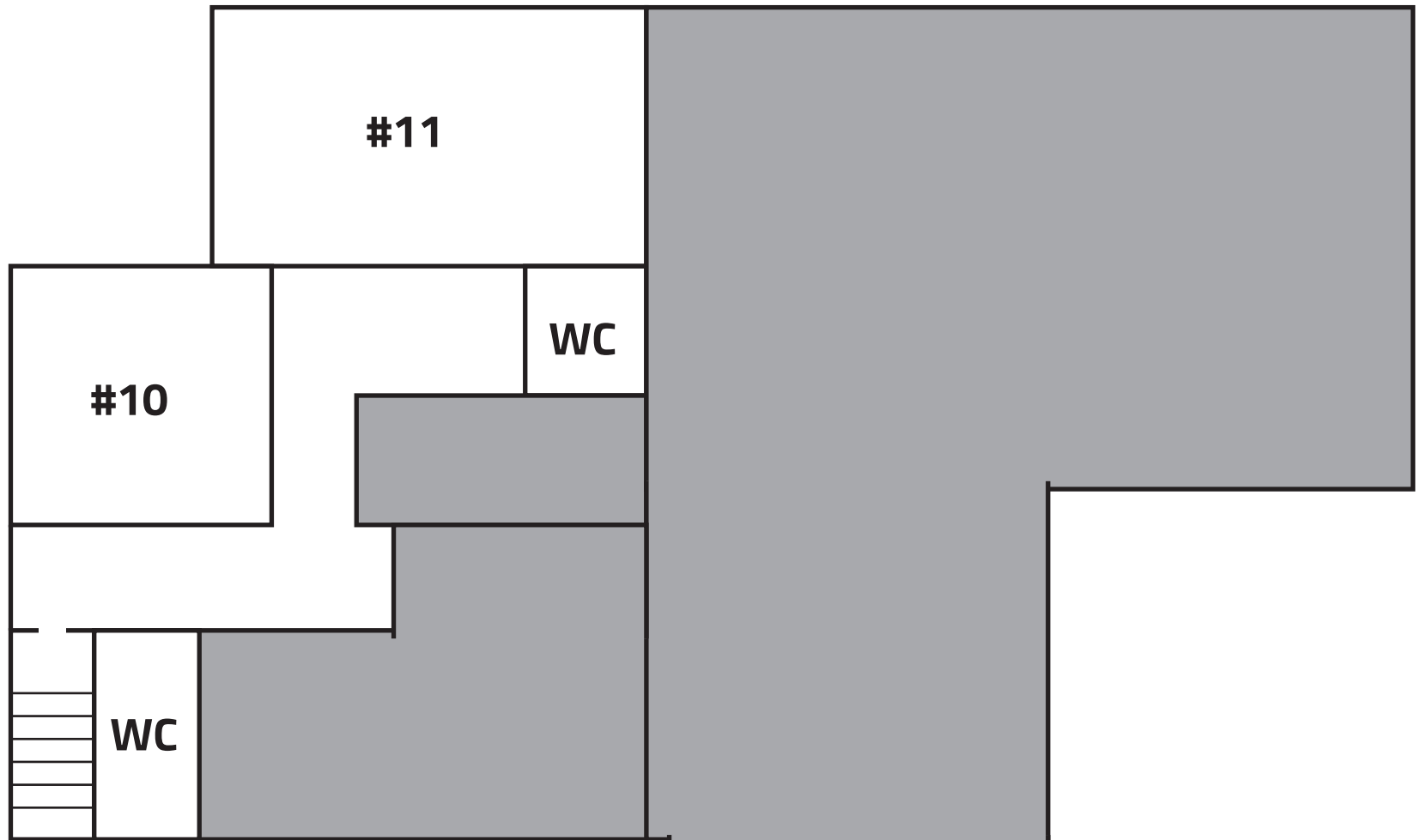


ERDGESCHOSS

Altbau

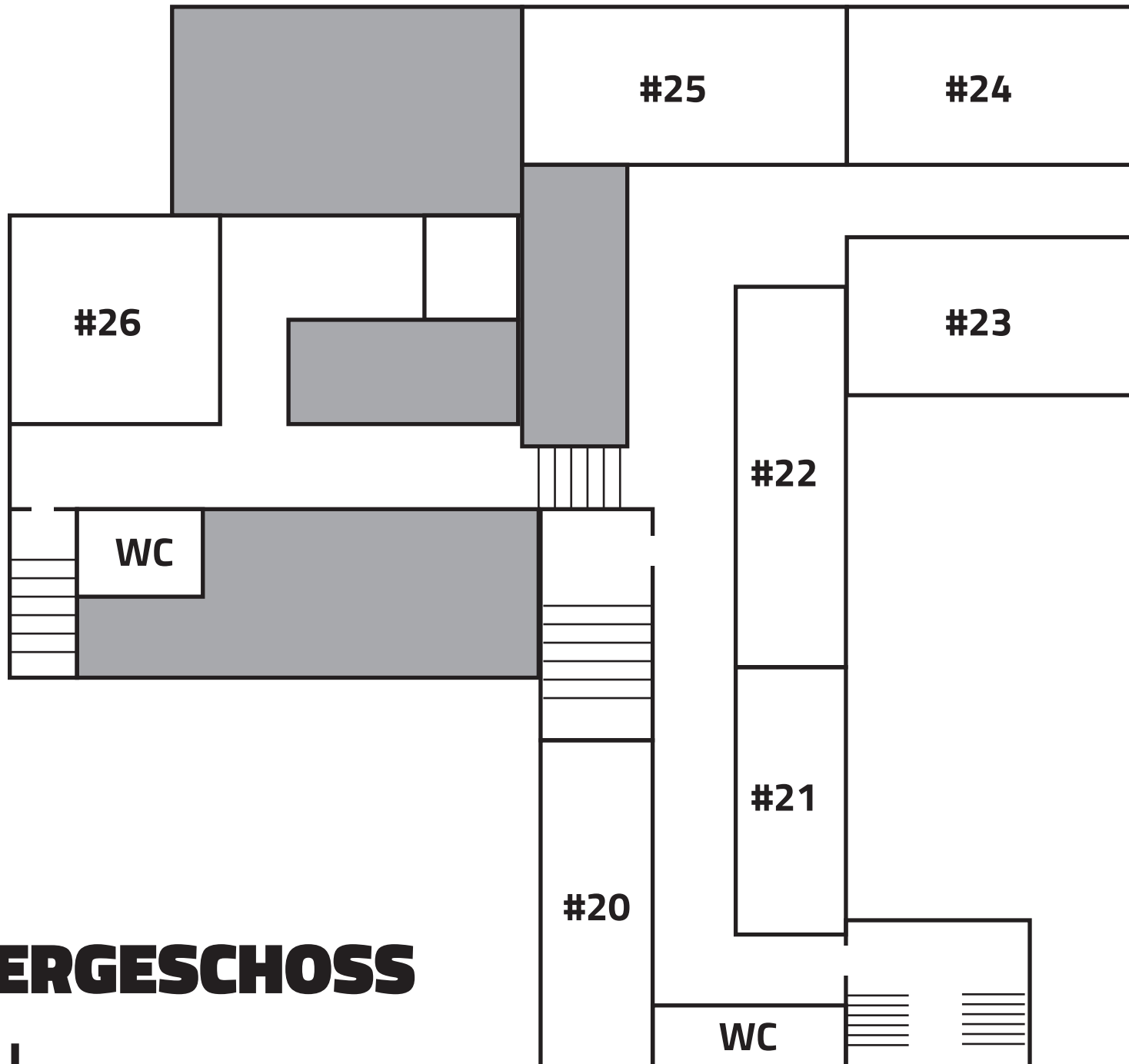


zum Haupteingang



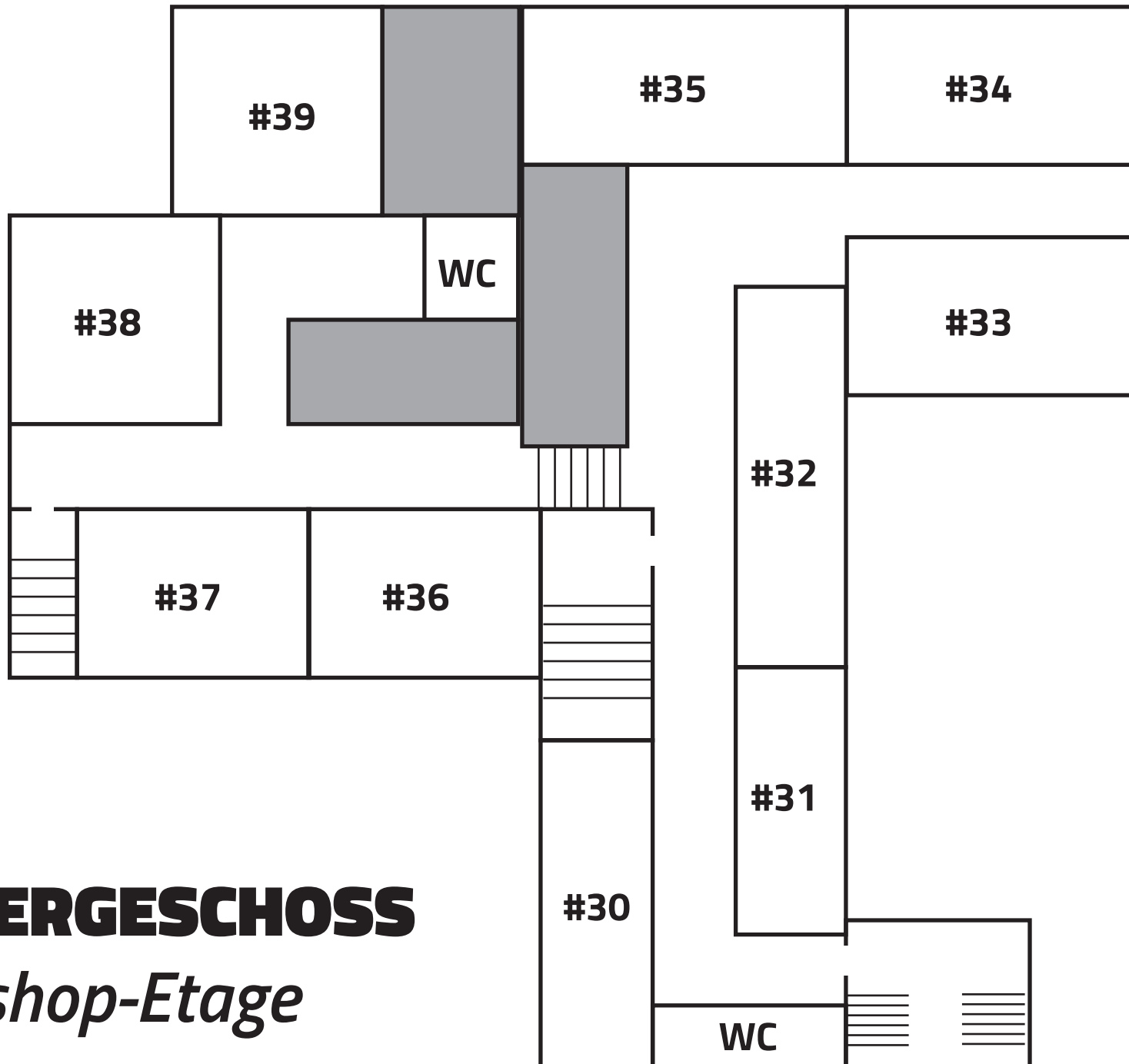
1. OBERGESCHOSS

Altbau



2. OBERGESCHOSS

Altbau



3. OBERGESCHOSS

Workshop-Etage

Altbau